

PME9.0 如何生成诊断文件

问题描述:

如何生成诊断文件

解决方案:

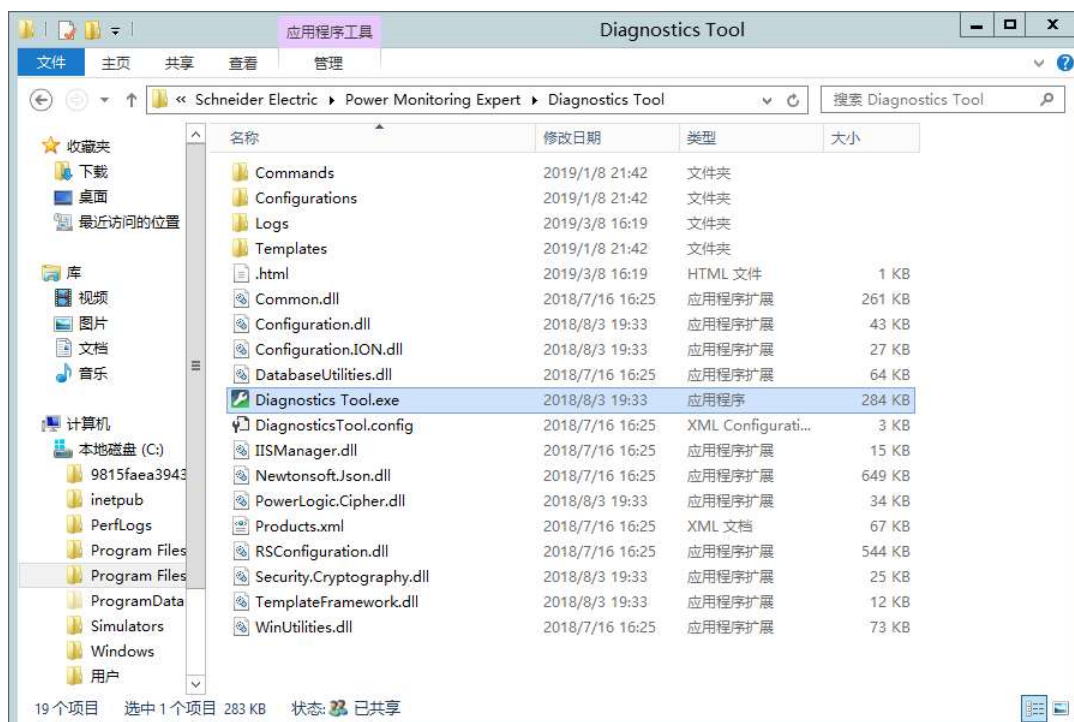
1 以管理员身份运行诊断工具:

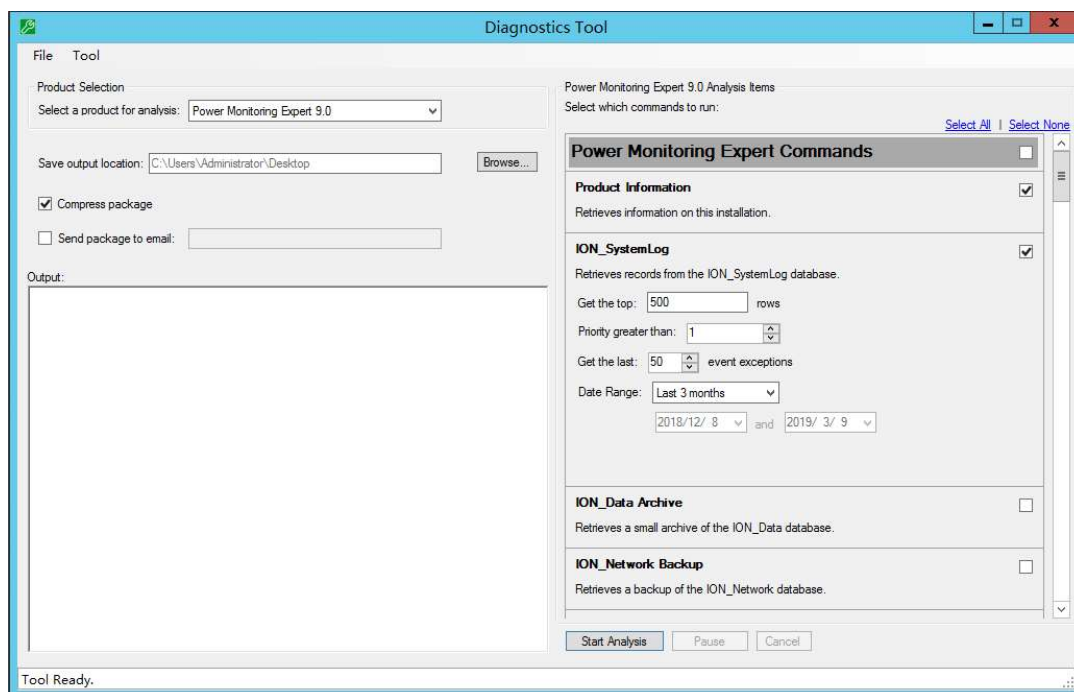
1> 按下 Window 键搜索“Diagnostics Tool”

或

2> 从 PME 的安装路径运行 Diagnostics Tool.exe

C:\Program Files (x86)\Schneider Electric\Power Monitoring Expert\Diagnostics Tool





2 设置:

- 1> 设置诊断文件保存的路径，如果生成后未在保存路径中发现诊断文件可不选 **Compress package**
- 2> 选择需要诊断的项目
- 3> 选择诊断的时间范围

3 点击 **Start Analysis** 生成诊断文件。

Diagnostics Tool

File Tool

Product Selection
Select a product for analysis: Power Monitoring Expert 9.0

1 Save output location: C:\Users\Administrator\Desktop Browse...

☒ Compress package

☐ Send package to email:

Output:

Power Monitoring Expert 9.0 Analysis Items
Select which commands to run: [Select All](#) | [Select None](#)

Power Monitoring Expert Commands

Product Information 2 ☒
Retrieves information on this installation.

ION_SystemLog ☒
Retrieves records from the ION_SystemLog database.
Get the top: 500 rows
Priority greater than: 1
Get the last: 50 event exceptions
3 Date Range: Last 3 months
2018/12/ 8 and 2019/ 3/ 9

ION_Data Archive ☐
Retrieves a small archive of the ION_Data database.

ION_Network Backup ☐
Retrieves a backup of the ION_Network database.

Start Analysis Pause Cancel

Tool Ready.